

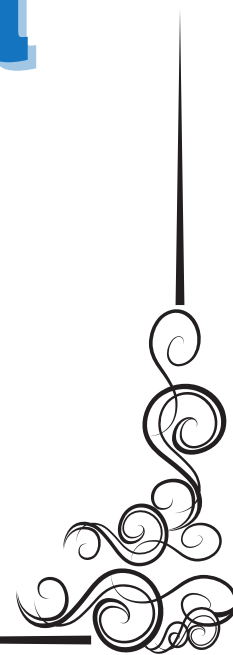


Accounting & Financial Women's Alliance

2019-2020 Impact Report



Accounting & Financial Women's Alliance
CONNECT • ADVANCE • LEAD



IN THIS REPORT

2	Headquarters
3	Message from the President// Message from the Executive Director
4	National Board of Directors//Leap Advisory Council
5	AFWA By The Numbers//Local Chapters
6	Connect.Advance.Lead. Conference//Social Media
7	Lifetime Members//Emeritus Members//Corporate Members
8	Member and Chapter Awards
9	Women Who Count National Conference
10	The Foundation of AFWA
11	Scholarship Recipients
12	Donors to the Foundation of AFWA
13-14	Past National Presidents
15	FY20 Financial Report
16	Corporate Partners and Alliances

/ Empowerment / Leadership / Integrity / Passion /



AFWA Headquarters

2365 Harrodsburg Rd, Ste A325
Lexington, KY 40504

p: 859.219.3532
e: AFWA@AFWA.org
web: www.AFWA.org

Headquarters Staff

Executive Director: Cindy Stanley
Member Engagement and Operations Specialist:
Catherine Schaefer
Membership Specialist: Mary Marshall
Membership Coordinator: Amber Earlywine
Events Coordinator: Jennifer Mayhugh
Member Services: Kara Hamilton and Rachel Gates



Message From the President

Tyna Gaylor
2020-2021 AFWA
National President

As AFWA celebrates its 82nd year, we recognize our history as well as the benefits to revitalize and renew ourselves. While the need for and benefits of networking with other accomplished women never changes, members need new programs, new tools, and new voices to guide the organization into the 21st century.

The 20-21 Board will meet the challenges with, among other initiatives,

- A Virtual Chapter, so all AFWA members may enjoy the benefits of a community of women in their field,
- Enhanced NASBA licensing to provide on-demand continuing education credits, and
- A Young Professionals Community to expand opportunities for emerging leaders to shape AFWA.

Leadership has established quantifiable goals to meet the challenges of this time. Declining membership, which has been complicated by COVID-19 and state-mandated social distancing guidelines and requirements, threatens AFWA benefits such as

cost-effective in-person conferences as well as implementation of much needed technology advancements. Even with the fast-changing environment, board and staff have pivoted to provide the first ever Leadership Conference in May, virtually, as well as AFWA's first ever virtual Women Who Count Conference in October. Coming away from these two successful web-based events, consideration will be given to the mix of in-person and virtual activities at the national level.

The Board seeks to grow membership from 1,342 to 1,600 by June 2021, a now aggressive goal in the Covid-19 environment, by offering solid benefits to members as well as the opportunity for nationwide, lifelong friendships, which repeatedly is cited by our members as AFWA's "secret sauce."

Members are invited to take their place in the revitalization of AFWA by considering the Power of One. Were each member to bring one new member, the membership goal would be shattered, and AFWA's influence and camaraderie expanded exponentially.

Why are you a member of AFWA? Please share your story with one friend, one colleague, one client or one contact and invite her to connect, advance, and lead with AFWA.



Message From AFWA Executive Director

Cindy Stanley
AFWA Executive Director

This year AFWA, the members and staff, have faced an unusual change in venue due to the impact of a nation-wide pandemic and the transition to a remote workforce. The general overall outlook has been positive for AFWA regardless of the challenges the organization has faced shifting to a virtual environment for meetings of all kinds, and of course our conferences. Zoomed in or zoomed out, we have all learned how to connect and work together throughout these strange times in our world.

The inaugural Connect.Advance.Lead leadership conference was held virtually on June 25-26 with overwhelming success. The staff, who had never organized or participated in a virtual conference, stepped up to the plate and made it a truly one-of-a-kind event. Attendees had the opportunity to enjoy a wide array of engaging speakers, networking, and entertaining events including the virtual tour of a Bourbon distillery, a horse farm, and a chat with an internationally renowned female Bourbon taster —providing a little glimpse of Kentucky for all to enjoy. The educational factor was an important aspect of the conference with 9 CPE hours offered for participants.

The Women Who Count Conference, held October 28-30, was an exciting virtual event which offered over 30 speakers and up to 20 CPE credits. Attendees and participants were enlightened, educated and entertained by a wealth of knowledgeable

presenters. Donors were generous to The Foundation scholarship fund by generating \$7003.00 through an online auction and virtual Foundation FunNight which showcased a comedian, thought-provoking trivia questions, a lot of camaraderie, and laughs.

Membership and chapter growth have been a key focus this year with an eye on retention, renewal, the addition of new members, and adding increased value and benefits to the membership experience. The formation of a virtual Chapter-at-Large provides a new way for members who are unable to join a local chapter to network and advance their leadership and professional skills in the workforce. Chapters were also provided with access to the AFWA Zoom line for chapter meetings and webinars. Several new essential leadership programs were offered to AFWA members along with discounted purchasing programs, and a revival and reformatting of the membership newsletter the Accountability.

Through our strategic plan, we are creating alignment that focuses on growth, improving advancement of women in the workplace and enhancing and updating the value of AFWA membership. This year we have hired several new staff members, launched several successful member discount benefits, created new strategic alliances with corporate partners, will continue forward with the MOVE Project, and add on to the expansion of our membership and chapter growth, education, benefits, and opportunities. We will continue to promote leadership, success, and to help you, as a member, succeed in your career and reach your optimum potential through everything that AFWA has to offer.

AFWA National Board of Directors



Tyna Gaylor: National President
Stephanie Searcy: President Elect

Wendi Christian CPA, CISA, CITP,
CGMA: Vice President

Shelby Williams, CPA: Vice President

Jessica Perkins: Treasurer

Madeline Trimble: Director

Stephanie Sommers: Director

Marie Ramkey, CPA: Director

Guinevere Moore: Director

Amy Landry: Director

Nicole Hopkins: Director

Laura Mangan, CPA, CMA, MBA:
Immediate Past President

LEAP Advisory Council

The LEAP Advisory Council was created to ensure the voice of emerging leaders is heard and utilized within the National organization. Members of LEAP are working to grow young professional membership within AFWA by developing programs and initiatives specifically designed to meet the needs of the modern accounting and finance professional.



Vanessa Kubick, LEAP Council Chair Nonprofit Accounting Consultant (Washington, D.C.)
Katie Bertoglio, CPA Senior Accountant, Thompson Palmer & Associates, PC (Jackson, WY)

Bridget Donoghue Illinois State University

Amanda Sayn, CPA Senior Accountant, Shindel Rock (Novi, MI)

Michaela Spreier Illinois State University

Neha Verma, CPA CAFounder NV CPA, HubOrgs (Los Angeles, CA)

1,185

Accounting & Finance
Professionals Nationwide

57

Nationwide Chapters

376

New Members in FY20

\$20,516

Cash Scholarships Awarded by
the Foundation of AFWA

104

Lifetime Members

208

CPE hours offered in NASBA year
2020 through local chapter events,
national conferences, and webinars.

Ames Chapter #15822
Atlanta Chapter #01215
Bellevue Chapter #15926
Billings Chapter #10042
Birmingham Chapter #0478
Buffalo Chapter #02317
Casper Chapter #14213
Central Arkansas Chapter #11922
Central Florida #16712
Central New York Chapter #02923
Chattanooga Chapter #05045
Dallas Chapter #06416
Denver Chapter #02654
Des Moines Chapter #15340
District of Columbia (DC) Chapter #02477
East Bay Chapter #16917
El Paso Chapter #1298
Flagstaff Chapter #13517
Fort Walton Beach Chapter #1318
Fort Worth Network3
Grand Rapids Chapter #01016
Greater Baltimore Network12
Greenville Chapter #14314
Houston Chapter #03315
Huntsville Chapter #13614
Illinois State University22
Indianapolis Chapter #0016
Jackson Chapter #06917
Jackson Hole Network0
Kansas City Chapter #03052
Knoxville Chapter #09221
Kokomo Chapter #1320
Los Angeles Chapter #00724
Louisville Chapter #0189
Marion Chapter #1087
Mesa East Valley Chapter #14717
Milwaukee Chapter #04120
Minn/St. Paul Network5
Music City Chapter #1643
New Orleans Chapter #05627
New York Chapter #00313
Northeast Florida #16517
Oklahoma City Chapter #04415
Omaha Chapter #10141
Orange County Network8
Philadelphia Chapter #00626
Phoenix Chapter #04323
Pittsburgh Network0
Raleigh Chapter #1502
Richmond Chapter #02224
San Diego Chapter #01723
San Francisco Chapter #0115
Santa Barbara Chapter #1224
Seattle Chapter #00939
Silicon Valley Chapter #10321
Spokane Network #0041
Springfield Chapter #09831
Tacoma Chapter #0539
Tampa Network5
Troy Chapter #1680
Tulsa Chapter #03871
West Alabama Chapter #15420
West Palm Beach Chapter #0494
Wichita Chapter #08823



Getting Social

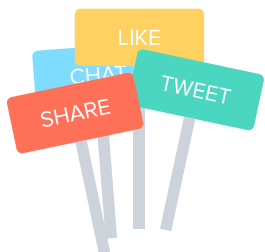
AFWA also relies on social media as a consistent communication platform for members. We encourage members and chapters to build online communities and pass down news as it happens.

Facebook: 3,992 likes/follows

Twitter: 914 followers

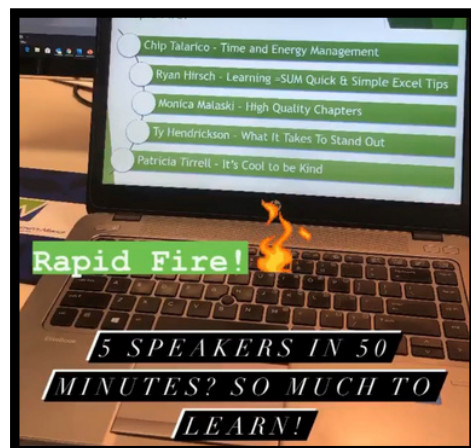
LinkedIn: 3,600 connections

Instagram: 477 followers



Connect.Advance.Lead. Conference

The first virtual AFWA Connect.Advance.Lead Conference was held on June 25-26 with resounding applause from all attendees and speakers who participated in this one-of-a-kind event. Attendees were able to network and advance their leadership and education skills with a line-up of powerful, engaging speakers, entertainment, and receive up to nine CPE credits.



Lifetime Members

In an effort to emphasize membership commitment, reward long-time members, and generate revenue, AFWA announced a Lifetime Member campaign in May 2015. The campaign capped with 104 Lifetime Membership commitments.



ALANNA ABREU SUSAN ADAMS ALISON ALDRICH CATHY ALLEN DIANE ALLISON CORNELIA ALSHEIMER PATRICIA ANGELL SYLVIA AYERS SUSAN BARNA DESSIMA BARNWELL MARIA BEECHAN ANAT BORODYANSKY BERRANTHIA BROWN JEANETTE CAMBRON MARY LOU CARVER TARA CHAMBERS-CAMP ANNETTE CHRISTENSEN SUE CHRISTENSEN WENDI CHRISTIAN SHANNON COMSTOCK MARY-CLAIRE CORCORAN BARBARA COVINGTON STACEY CRAIG KRISTIN CULLITON ANN DEEGAN DARCELLE DIXON-HUNT CARRIE DOSTAL	CINDY DUDDEN SUSAN DURR KATHERINE EASTHAM DANA FREELAND ANDREA GARCIA TYNA GAYLOR VIRGINIA GEIGER KAY GOTSHALL TRISHA GROSCH EDRONDA GUIRIBA KAREN GUNTHER KELLY HADEN WENDI HALL LINDA HARRIS KARYN HARTKE ANGELA HESTER ASHLEY HUSS MARY JOHNSTON LORI KELLEY MELODY KING GALE KREITZBERG PHYLLIS KRUSH SHAWNDELL LAFOLLETTE CHRISTIE LININGER KIMBERLY LYONS HELEN MALEADY LAURA MANGAN	PATTI MANN VICKI MAY LEIGH-ANNE MCCLURE PAMELA MEADOWS TASSIE MEDLIN RENEE MELVILLE DEBBIE MICHAEL MONIKA MILES VIVIAN MOLLER BROOKE MORELAND DANIELLE MOWERY EMILY NAVE ANN NESHEK MELANIE NORTON CHRISTI OLSEN SARA PAGE LISA PALMERSHEIM PAULOMI PATEL DIANNA PATTON JESSICA PERKINS RENEE POLLEY MARIE RAMKEY RENEE RICHARDS CAROLYN RICHIE STEPHANIE ROSCOE MORGEN ROSE DEBORAH ROSENGARTEN	BARBARA SAEUGLING MELISSA SAGER KATHRYN SCHRADER STEPHANIE SEARCY VICKI SHORT GINA SLACK STEPHANIE SOMMERS KATHRYN SOUTHARD GRACE STATEN PENELLE STRUM INGRID SWENSON BRENDA SWINEY JOANN TUCKER MICHELLE VENUS LISA VOLLERT ANNA VON STRAUSSBURG BAMBI WEBER JOAN WEISHAUPL PAMELA WENNER SHELBY WILLIAMS FELICE ZALK
---	--	--	--

Emeritus Members

In 2016, AFWA began to recognize long-term members with an official Emeritus Status. Emeritus members may apply for the status if they have been a member of AFWA for at least 30 years and are at least 70 years old. Emeritus members are free of National Membership dues. We recognize the following Emeritus Members as of October 2020.

DOROTHY ASHLEY ILSE BECK HARLEEN KAY BRANDON ROCHELLE CABALLERO CAROLYN CASSELBURY CONSTANCE CLAUSEN	MARGARET FARR NANCY GILILLAND ROSE MARIE GWINNER JOYANNA HAMMOND EUNICE HELGESON HEAN HURKETT	PAULA MARCHAND RUTH NOWICKY WYLENA RAYMOND KARIN RIGGINS JEAN ROSE CAROL SHELBRACK	CAROL STROMMER MYRA SWICK MARILYN VITO ELEONORE WILLIAMS
---	--	---	---

Corporate Members

Businesses and firms who join multiple members in AFWA can earn discounts on membership as well as other special benefits. Not only do Corporate Members gain National Membership, but employees can join local chapters across the country. Thank you to our Corporate Members!

Level 3 Corporate
Grant Thornton
KPMG

Level 2 Corporate
BKD LLP

Level 1 Corporate
Bland & Associates
Bowers and Company
Dannible & McKee
Dixon Hughes Goodman
Elliott Davis, LLC
Hamilton County Board of Education

JamisonMoneyFarmer
Koch Industries
LBMC
ONEOK
Seim Johnson
Workiva

AFWA's Women Who Count Awards

At the annual Women Who Count Conference each year, the Accounting & Financial Women's Alliance proudly recognizes outstanding women who uphold the mission of AFWA, demonstrate excellence in their communities and careers, and positively influence others.

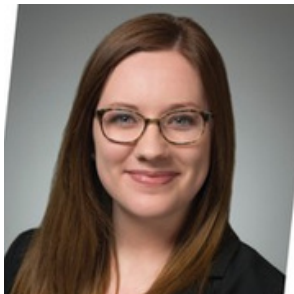
AFWA is proud to present the annual award winners announced at the virtual Women Who Count Conference held on October 28-30. A heartfelt congratulations to all of the individual and chapter award winners--the full list of award winners below:



President's Award:
Dorothy Ashley



Growth Award:
Jennifer Collins



Growth Award:
Lauren Akers



Emerging Leader Award:
Emma Caldwell



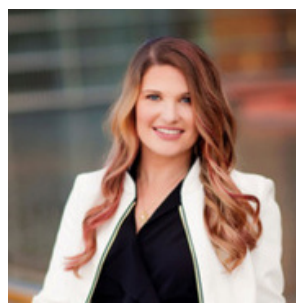
Emerging Leader Award:
Anna Raney



Industry Professional Award:
Andrea Wilt



Professional in Public Practice Award:
Lindsay Surrrels



Small Business Award:
Liz Mason



Academic Award:
Madeline Trimble

AFWA Chapter Achievement

Membership: District of Columbia Chapter

Communications: Denver Chapter

Programming: Kansas City Chapter

Scholarship: Denver Chapter

Public Service: Illinois State University Chapter

AFWA Chapter Milestones

30 years—AFWA Ames Chapter 1990-2020

60 years—AFWA Jackson Chapter 1960-2020

70 years—AFWA Buffalo Chapter 1950-2020

70 years—AFWA Denver Chapter 1950-2020

70 years—AFWA Richmond Chapter 1950-2020

70 years—AFWA District of Columbia Chapter 1950-2020

80 years—AFWA New York Chapter 1940-2020





Women Who Count Virtual National Conference

Accounting and Financial Women's Alliance

connect. advance. lead.

Industry professionals from across the country attended the virtual Women Who Count Conference, Oct. 28-30, to celebrate the AFWA's 82nd year from the comfort of their homes. Accounting and finance professionals came together for three days of networking, education, and fun events. The 2020 Conference featured over 39 speakers and 21 CPE credits covering topics on accounting, tax, finance, leadership, communication and more, recognized the professional and chapter award winners, and raised valuable scholarship funds for The Foundation through Foundation FunNight and The Foundation for AFWA Fundraising Auction. Conference veterans and new attendees alike joined to connect with each other, gain insight and inspiration and celebrate the AFWA experience.



The Foundation of AFWA

AFWA FOUNDATION SPOTLIGHT



Anat Borodynasky

CPA, Shareholder

Dallas, TX Chapter

Favorite thing about serving on the Foundation Board?

Feeling like you're making a difference and helping shape the future of the organization

Please share your top tip for managing people?

Learn about Empathy early in your career and practice it

Where is your favorite place to vacation?

Beach, Cancun Mexico is a Go-To

How did you decide to go into accounting/finance?

Math was a strength. Accounting runs in the family. My grandmother was a senior governmental accountant in soviet russia in the 1950s and 1960s. Both of her granddaughters (my cousin and I) ended up in the profession. She wanted us to be doctors...

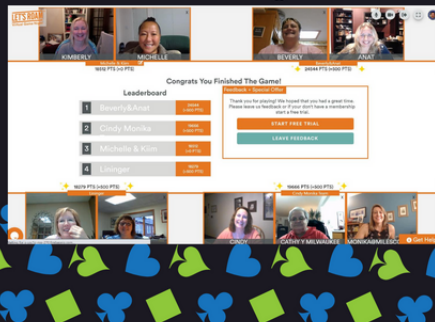
Show your support for the Foundation of AFWA!

AFWA Foundation FUN Night

Foundation of AFWA for a night of FUN and laughter! We've had the pleasure of having comedian and motivational speaker, Amanda Hebert, to bring humor to our Women Who Count Conference! As a native in, Pastor's Wife, and Mother of three Amanda has a great sense of humor and a love for life. You will laugh till you can't breathe. She makes fun of her life and yours. She has performed at various events, Volunteer Appreciations, Women's Conferences and Marriage Retreats, Holiday Events, and has headlined shows. Side-splitting comedy, she can sing and encourage others. Amanda is a motivational speaker. Her style is clean humor focusing on the joys of everyday life. She is upbeat and inspires her audience to take time to laugh and find joy in the journey.



AFWA Foundation Virtual Game Night



Be a part of someone else's success story!

HELP SUPPORT THE FOUNDATION OF AFWA!



A message from 2019-20 Foundation Chair, Pamela Wenner

As I look back on the installation of the '19 – '20 Board of Directors of The Foundation it is incredible how much our worlds have all changed. The Philadelphia conference, in May 2019, was fun and exciting and The Foundation Board was diving right in to making the new year a successful one. We started by working on a new strategic plan. Though we still have more work to do, we have made progress. At the National conference in Florida, we announced our new mission statement: Through stewardship, The Foundation promotes and advances women in accounting and finance by cultivating relationships, securing contributions, and providing scholarships for education and career development.

This year we cultivated relationships by recognizing our donors.

We created the Betsy Scott Circle to honor those members who have donated more than \$5,000. These are our donors who have made a large impact and we were honored to be able to recognize their kindness. And the Ida Brue Legacy Society was established to recognize those who have remembered The Foundation in their estate planning. These women are shining examples of the generosity that our organization has to offer.

We secure contributions through our tried and true fundraising efforts. A large part of our donations are raised at the National conference. This year, through the generosity of our committed members, we were able to raise nearly \$30,000. The continued success of our fundraising has enabled us to designate funds to establish an endowment that will support The Foundation long into the future. As these efforts grow, we will be able to

Foundation Board of Directors

Pamela Wenner: Chair
Christie Lininger: Chair Elect
Stacey Craig, CPA: Vice Chair
Melissa Sager: Treasurer
Gale Kreitzberg, CPA: Secretary
Wendi Hall, CPA: Director
Sara Page: Director
Michelle Venus: Director
Alanna Abreu: Director
Jevonne Shepherd MBA CMA CIA: Director
Anna Raney: Director
Sarah Millitelo: Director
Maddy Trimble: Director
Mary Lou Carver: Past Chair

accomplish so much more and we are excited to be able to make a greater impact.

Our ability to provide scholarships has allowed us to support the education of our future accounting and finance leaders, as well as encourage the groundwork for career development for our membership. We have an exceptional scholarship program that has grown over the 16 years since The Foundation was established. This year we awarded scholarships that totaled nearly \$20,000 to well deserving students and members. We are proud to report that this adds to what The Foundation has been able to award, since inception, to be more than \$500,000. We are honored to be able to offer this encouragement and strive to continue our work long into the future.

March brought a hard stop to everyone's "normal" life and plans for this year. Like most everyone, The Foundation has had to come up with new ideas to plan for what has become a virtual way of connecting. We hope that you will keep an eye out for our new fundraising idea's and include The Foundation in your donation plans. We appreciate your generosity.

The Foundation board members are passionate about promoting and advancing women in any way we can. The dedicated support and encouragement from each are unparalleled. I do not have the words to express how rewarding it has been to serve with these talented and generous women. I encourage all of you to consider the opportunity to serve on The Foundation of AFWA Board of Directors. I promise you; you will get more out of it than you will ever give.

Scholarship Recipients



Erisa Ganellari - CUNY,
Bernard M. Baruch College,
B.S. Finance



Bridget Donoghue - Illinois State
University, Master's in
Professional Accountancy



Eva Ducanis - Nova Southeastern
Univ., Bachelor's degree, Member
East Palm Beach Chapter



Janet Valencia - California State
Univ., BS Business Administration,
Accountancy



Dawn Castle - Peru State College,
Accounting; Management



Samantha Marks - University
of Kansas, B.S. Accounting



Katherine Metcalfe - Missouri
State University, B.S. Finance



Nomin Ulzilsaikh -
University of Washington



Olivia Celinski - DePaul
Univ., B.S. Finance



Brittany Jones - Masters of
Public Accountancy



Hope Rowlett - Western Kentucky
University, B.S. Finance



\$1,000+

Mary Burns
Karen Jacobson
Susan Adams
Barbara Covington
Pamela Wenner
Shelby Williams
Joyanna Hammond

\$500-999

Mary Bonawitz
Linda Harris
Cathy Allen
Christie Lininger
Monika Miles
Stacey Craig

\$250-499

Amy Landry
Stephanie Roscoe
Penelle Strum
Wendi Hall
Betsy Scott
Christi Olsen
Annette Christensen
Laura Mangan
Michelle Venus
Berranthia Brown
Wendi Christian
Gale Kreitzberg
Tyna Gaylor
Diane Lyngstad
Melody King

Edy Hoyt
Teresa Indorato
Helen Maleady
Joan Malone
Chinwe Ofuru
Sara Page
Renee Richards
Melissa Sager
Bambi Weber
Amanda Engebretsen

Becky Egan
Mary Erlenborn
Cheryl Heitz
Kimberly Hencke
Brian Jacobson
Pamela Meadows
Alexandra Miller
Guinevere Moore
Catherine Mulder
Margaret Munson

Christine Perszyk-Cox
Sharon Akins
Bryce Alves
Ashley Anderson
Loyce Anderson
Maggie Anderson
Roxanne Augenstein
Amy Bair
Susan Barrett
Karen Behnke

\$100-249

Diane Allison
Sylvia Ayers
Mary Lou Carver
Katharine Dill
Carrie Dostal
Laura Farney

Lori McKeage
Perrin Gilbert
Vanessa Kubick
Wendy Rohrssen
Cindy Dudden
Lori Kelley
Lorilee Norby
Cindy Withrow
Dianna Patton
Stephanie Sommers
Kathryn Schrader

Kay Pitt
Tina Polf
Stephanie Somers
Stacia Stone
Melanie Hanna
Beverly Anderson
Megan Cannon
Ann Deegan
Sandy Edwards
Scott Kaminsky
Jessica Perkins

Branwyn Bigglestone
Sheri Black
Janice Brady
Laurie Brogan
Beth Byrne
Rochelle Caballero
Cheryl Carlile
Lucille Caserio
Gail Cioffi
Barbara Coe
Tatiana Copeland

\$50-99

Wendy Baumgartner
Darcelle Dixon-Hunt

Mary-Claire Corcoran

Up to \$49

Jamie Carter

Morgan Crews
Kristin Culliton
Kathy Daly
Tina Dandry Mayes

Karen De Los Reyes	Judith Marfechuk	Joanne Sylvanus
Donna Demilia	Carol Marsala	Willadene Tolmachoff
Melanie Dunton	Annie Marshall	Lisa Waite
Victoria Dynarski	Nelica Matos	Angie Wildermuth
Patricia Faughnan	Kate Maxwell	Andrea Wilt
Mary Fichtenberg	Vicki May	Maria Wong
Laurie Fleischman	Kathleen McCarthy	Ruth Yeager
Johanna Flott	Jacklyn McCroskey	Ruth Zakowski
Dana Fox	Danielle McMahon	Bridget Donoghue
Lynne Green	Marie McNabb	Debbie Rowden
Meg Green	Kelleen Menge	Joanie Sompayrac
Trisha Grosch	Christina Michalczak	Andrea Bowyer
Edronda Guiriba, CPA	Lana Miller	Yvonne Braune
Sarah Catherine Gutierrez	Brooke Moreland	Rachael Dupuy
Stephanie Halle-Edwards	Elizabeth Mosser	Karen Johnston
Patricia Hamilton	Kelley Nichols	Margaret Leong
Carole Hanson	Melanie Norton	Christine Naylor
Tammy Hofstede	Shannon O'Neil	Margaret Vogl
Nicole Hopkins	Karen O'Brien	Teresa Wright
Mary Humfelt	Sharron O'Donnell	Jane Brown
Elaine Igelman	Laura Ohringer	Sue Christensen
Emily Inman	Rachel Osburn	Theresa Copeland Roberson
Kelly Jones	Elizabeth Pell	Cindy Davis
Randy Joseph	Joan Perry	Lani Huck
Lori Kaiser	Melissa Phillips	Jeanmarie Leopold
Cynthia Kessler	Beverly Poore	Monica Malaski
Susan Knox	Patti Prince	Kristen Perkins
Lorraine Kolasinski	Margo Quinn	Mabel Quinto
Andrea Koloff	Cindy Rodriguez	Jill Schafer
Bonita Kremer	Barbara Roller	Kathryn Seltman
Tammy Laird	Ruth Roman	Grace Staten
Dawn Larimer	Deborah Rosengarten	Maureen Volz
Chad Lippert	Louise Seitman	Yvette Beaudin
Jeanette Longman	Barbara Sheetz	Milla Austin
Jerri Loveland	Stacey Shellnut	Wayne Borkowski
Adrienne Lowber	Jessica Shorney	Cheryl Laurent
Sherry Lyons	Karen Smith	Catherine Yekenevicz
Patti Mann	Daphne Stasco	Ana Fernandez

**Over \$39,000
Raised for the
Foundation of
AFWA!**

Past National Presidents

1938-40	Ida S. Broo	Indianapolis	1979-80	Dorothy Lombard, CPA	Sacramento
1941-42	Mary C. Gildea	Chicago	1980-81	Helen J. Nyenhuis, CPA	Grand Rapids
1943-44	Jane Goode	Los Angeles	1981-82	Helen Shepherd, CPA	Los Angeles
1944-45	Dorothy Miller Jones	Spokane	1982-83	Jo Ann C. Dooley	Cincinnati
1945-46	Helen J. Maddex	San Francisco	1983-84	Lee G. Smart, CPA	Memphis
1946-47	Susie Sudderth	Atlanta	1984-85	Jean E. Krieger, CPA	Columbus
1947-48	Evelyn Forsyth	Grand Rapids	1985-86	Barbara H. Brock, CPA	Buffalo
1948-49	Marian A. Frye Doelker	Cleveland	1986-87	Gail E. Schiffer, CPA	New York
1949-50	Alice H. Aubert	New York	1987-88	Mikki Folsom, EA	Spokane
1950-51	Grace A. Dimmer	Detroit	1988-89	Patricia Morgan, CPA	Tacoma
1951-52	Vera Jean Williams	Los Angeles	1989-90	Rachel S. Query, CPA	Albuquerque
1952-54	Marguerite Gibb	Seattle	1990-91	Gayle Powelson, CPA	Memphis
1954-55	Vivian Warner Matick	Muskegon	1991-92	Theodora A. Sherman, CPA	Seattle
1955-56	R. Grace Hinds, CPA	Indianapolis	1992-93	Marilyn E. Vito, CPA, CMA	Philadelphia
1956-57	Zosia Edwards Stege	Chicago	1993-94	Courtney Cowgill, CPA, CMA, CIA, CFE	Denver
1957-58	Alma Westerman Otto	District of Columbia	1994-95	Shirley J. Laird	Anchorage
1958-59	Carolyn Abernathy	New York	1995-96	Ivy F. Zito, CPA	Connecticut
1959-60	Genevieve A. Michel, CPA	Seattle	1996-97	Donna S. Reed, CGFM	Phoenix
1960-61	E. Virginia Barnett	Houston	1997-98	Barbara L. Clark	Indianapolis
1961-62	Betty Brown, President-Elect	Detroit	1998-99	Regina Y. Rose, CPA	Birmingham
	Ann D. Snodgrass	Dallas	1999-00	Amy J. Norkus, CPA	Grand Rapids
	(proceeded to Pres. 7/2/61)		2000-01	Cindy Coleman Kessler, MBA	New Orleans
1962-63	Erma A. Sembach	Cincinnati	2001-02	Denisa Jones, CPA	Central Arkansas
1963-64	Pearl M. Isham	Los Angeles	2002-03	Mary Feeney Bonawitz, PhD, CPA	West Palm Beach
1964-65	Phyllis E. Peters, CPA	Detroit	2003-04	Betsy A. Scott, CPA	Kansas City
1965-66	Margaret L. Bailey, CPA	Denver	2004-05	Christi L. Olsen, CPA	Omaha
1966-67	Dr. Bernadine Meyer	Pittsburgh	2005-06	Debbie L. Michael, CPA	Billings
1967-68	Julia J. Kaufman	Cleveland	2006-07	Joy N. Barron	Birmingham
1968-69	Naomi J. Nelson	Portland	2007-08	Karen J. Gunther	Boston
1969-70	Mary Louise Hawkins	Chicago	2008-09	Barbara W. Covington	Fort Walton Beach
1970-71	Antoinette Peters, CPA	Cincinnati	2009-10	Stacey L. Craig, CPA	Phoenix
1971-72	Madeline Draheim	New York	2010-11	Vivian L. Moller, CPA	Milwaukee
1972-73	Madeline Guimond	California Citrus Belt	2011-12	Monika P. Miles, CPA	Silicon Valley
1973-74	Elizabeth A. Reid	Boston	2012-13	Cheryl Heitz	Flagstaff
1974-75	Pearl J. Mullvain	Phoenix	2013-14	Catherine A. Mulder, CPA, CGMA	Ames
1975-76	B. Jean Hunt, CPA	Birmingham	2014-15	Berranthia C. Brown, CMI	Atlanta
1976-77	Beryl H. Martin	Detroit	2015-16	Dianna M. Patton, CPA, CFP®	Richmond
1977-78	Joan M. Smith, CPA	Dayton	2016-17	Linda E. Harris, CPA	Billings
1978-79	Linda M. Canney, CPA	Seattle	2017-18	Lori Kelley, CPA	Fort Walton Beach
			2018-19	Karyn Hartke, CPA	Northeast Florida
			2019-20	Laura Mangan, CPA, CMA, MBA	Mesa



Financial Report

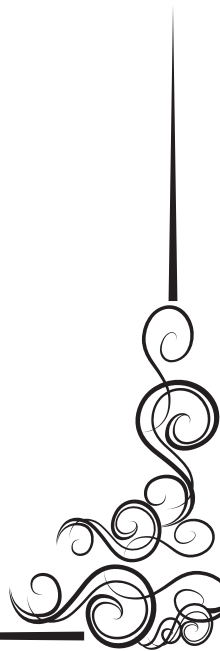
FINANCIAL REPORT July 1, 2019 - June 30, 2020

STATEMENT OF FINANCIAL POSITION - June 30, 2020

ASSETS	
Cash and cash equivalents	\$29,393.00
Investments	\$148,441.00
Accounts Receivable	\$2,450.00
Prepaid Expenses	\$10,485.00
Total Assets	\$190,769.00
LIABILITIES AND NET ASSETS	
Current Liabilities	
Accounts payable and accrued expenses	\$155,571.00
Deferred Revenue	\$214,247.00
Due to Foundation	\$34.00
Total Current Liabilities	\$369,852.00
Net Assets	
Unrestricted	\$(179,083.00)
Total Net Assets	\$(179,083.00)
Total Liabilities and Net Assets	\$190,769.00

STATEMENT OF ACTIVITIES - June 30, 2020

REVENUE	
Membership Dues	\$205,784.00
Annual Conference	\$151,107.00
Contributions	\$26,833.00
Advertising	\$18,024.00
Product Sales	\$351.00
Royalties	\$15,779.00
Investment Income	\$6,212.00
Chapter Reactivation Funds	\$ 0
Total Revenue and Support	\$411,524.00
EXPENSES	
Program Services	
Annual Conference	\$199,819.00
Publications and Website	\$17,287.00
Chapter and Foundation Support	\$49,998.00
Products	\$2,500.00
Total Program Services	\$269,604.00
Supporting Services	
Membership Services	\$52,580.00
Fundraising	\$19,999.00
Leadership	\$33,836.00
Management and General	\$60,137.00
Total Supporting Services	\$166,552.00
Total Expenses	\$436,156.00
Change in Net Assets	\$(22,088.00)
NET ASSETS, beginning of year	\$(156,995.00)
NET ASSETS, end of year	\$(179,083.00)



Corporate Partners & Alliances

Corporate Partners not only financially support AFWA, they provide valuable programming and discounts to our membership. In addition, the alliances we form with other organizations allow AFWA to expand our reach and offer further benefit to our members.



Proud Publishers of



THOMSON REUTERS



The Association of
Accountants and
Financial Professionals
in Business

