

Password Management Systems

THE GREAT AND MASTERFUL WENDI S HALL, CPA, IAR,
MANAGING PARTNER AT SMALL OFFICE SOLUTIONS, LLC



1

~~Password~~
~~1P@ssword~~
~~Pa55word1~~
~~Pa55word2~~
~~1P@55word234~~
~~qwertyUIOP~~
~~Fluffy~~
~~Packers~~
~~Mustangs~~



2

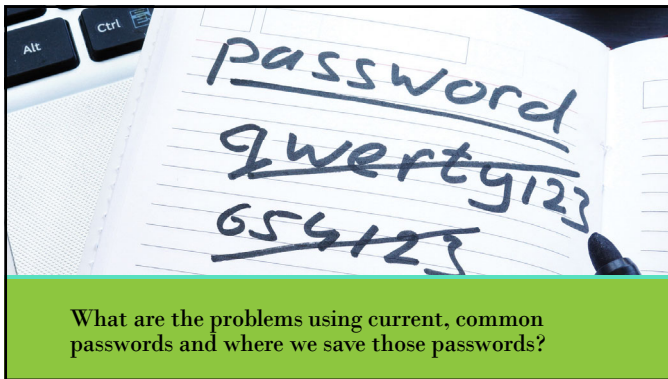
Today's objectives:

What problems can occur using current,
common password storage

What are some full-featured, password
management systems, features, and costs

Best practices for deploying, maintaining, and
using a password management system

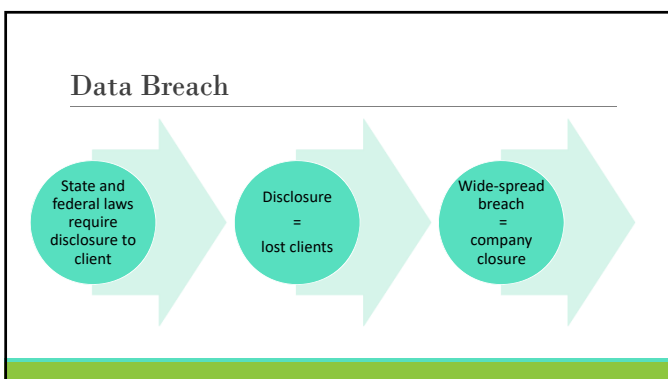
3



4



5



6

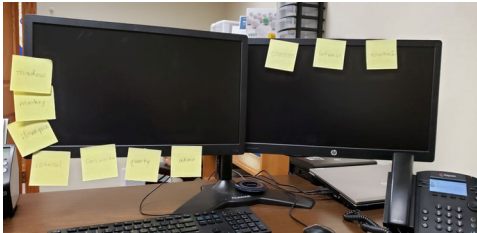
Passwords are frustrating – and insecure

When it comes to protecting today's digital business, a spreadsheet of passwords just won't cut it anymore.

 <p>Passwords are cumbersome</p> <p>The average employee struggles with nearly 200 credentials to keep track of.</p>	 <p>Poor habits = more risk</p> <p>80% of data breaches can be traced to weak, reused, and stolen credentials.</p>	 <p>Password sharing is a pain</p> <p>Credentials get passed around by email, chat, or paper, exposing the business to risk.</p>
 <p>Productivity is impacted</p> <p>When employees are distracted by lockouts and resets, they're not getting work done.</p>	 <p>IT lacks control</p> <p>Businesses can't protect what they can't see. IT has little visibility into password security.</p>	 <p>Employees leave with access</p> <p>When onboarding is manual and piecemeal, former workers can still access company data.</p>

7

Internet Browsers



8

Password Managers

Useful for individuals, families, and businesses

Create a depository of passwords across devices, browsers, even people

Save time

Secure information for employee turn-around, both on-boarding and off-boarding

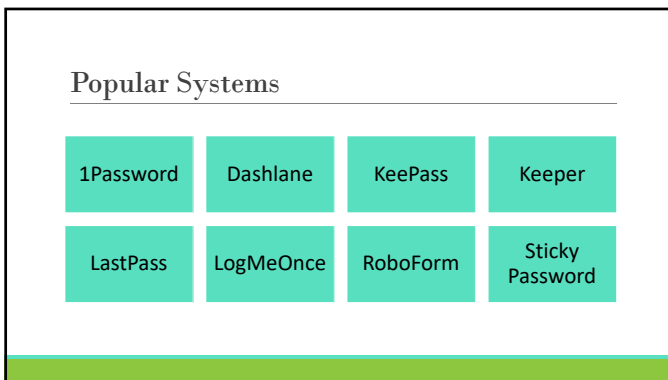
Allow for emergency access

Alert you to an attempt to access your accounts

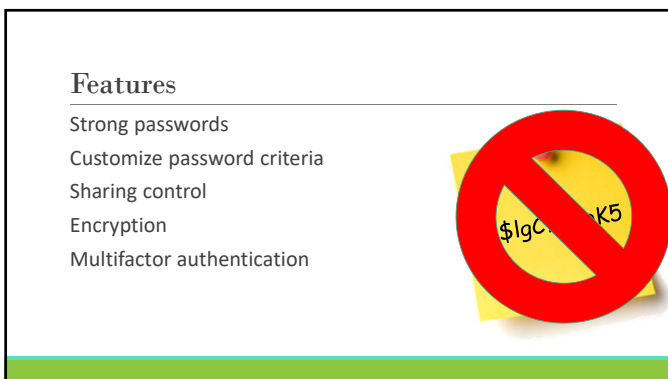
9



10



11



12

Quickly Enter or Generate Passwords

The image shows a login form for OpenTable with fields for Name, Email, Password, and Re-enter password. A 'Generate password' overlay is visible, showing options for password length (12), complexity (Uppercase, Lowercase, Numbers, Punctuation), and readability (Easy to say, Easy to read). The overlay also includes a 'Copy' button and a 'Close' button.

13

Business Benefits

One designated person to create sites and share
 Store and share payment cards
 Share multiple logins (and revoke them) quickly
 Use very complicated, shared passwords
 Multifactor authentication
 Strong encryption algorithms

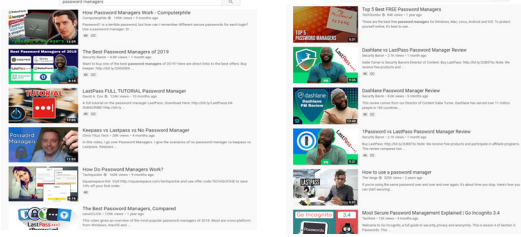
14



Best practices for deploying, maintaining, and using a password management system

15

How do I get started?



16

How do I get started?

PICK ONE

17

How do I get started?

SIGN UP

18

Create a complicated password

My favorite **A**ccountant **i**n **T**he **W**hole wide **W**orld **i**s **W**endi **H**!

19

Create a complicated password

I love **2**o travel **2**o **H**awaii **4**aweekend **C**ruise **w**ith **S**teve*

20

Create a complicated password

Yeay! I have a new hip!

Yea4MyneWhip!

21

Create a complicated password

Fido loves to give me ♥ kisses

FidoLove52giveme<3kisses

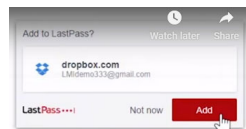
22

How do I get started?

Install the add-ins to your browsers

Build your password library

Update your passwords



23

How do I get started?

Setup your security

Setup emergency access

Share your logins with others

Group your logins

24

Not convinced yet?

I don't have enough going on in my life
 I'm bored
 I have an excess of financial wealth
 I want to see what will happen
 It will never happen to me
 I will get to it sometime
 I don't use a computer

25

To Contact Wendi:

WENDIH@SOSLLC.COM
 (414) 393-0880
 TWITTER
 LINKED IN

Find Small Office Solutions:

WWW.SOSLLC.COM
 FACEBOOK
 YOUTUBE

26
